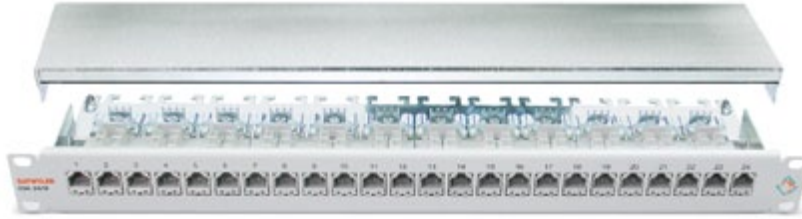


Patch panel CSA Plus 24/8 shielded Cat.6_A (IEC) with 24 RJ45 jacks

shielded, suitable for 10GBase-T

Patch panel CSA Plus 24/8 Cat.6_A (IEC), shielded

PRODUCT INFORMATION

APPLICATION

For the transmission of digital and analogues voice, video and data signals.
When used together with Cat.6_A, 7 or 7_A data cables the patch panel is suitable for all applications up to Class E_A (500 MHz), including 10 Gigabit Ethernet.
Designed to keep the electromagnetic influence of adjacent data cables as small as possible and to fulfil the required Allien Crosstalk limit values.
Applicable for Power over Ethernet (PoE) / PoE+ in accordance with IEEE 802.3at.

CONSTRUCTION

Housing: Solid metal, grey, similar to RAL 7035; simultaneous cover attachment and shielding contact using two screws
Boards: 4 base boards, each with 6 LSA Plus terminal blocks and 6 RJ45 sockets
Screen tap: 360° shielding via cable clip
Strain relief: with cable clip and a tie wrap

A termination aid is available as an optional accessory. This consists of two angular sheets that can easily be fixed to the frame or cabinet and make the cable termination more comfortable.

CONNECTION SYSTEM

Cable: LSA Plus punch down contacts for copper wires
AWG22 up to AWG26
Socket: Shielded RJ45 connector (measured up to 500 MHz)

APPLICABLE STANDARDS

IEC 60603-7-51 (Cat.6_A shielded, 500 MHz)
ISO/IEC 11801:2002 / Amd.2:2010
EN 50173-1:2011
TIA/EIA 568-B.2-10:2008

TERMINATION

Wire termination in accordance with T568A or T568B, colour coded

GENERAL PROPERTIES

 EMC shielded
 Cat./Class Cat.6_A / Class E_A

| Article No. | Description | Colour (similar) | PU |
|-------------|---|------------------|-------|
| 417980 | Patch panel CSA Plus 24/8 with 24x RJ45 jack Cat.6 _A (IEC) | RAL 7035 | 1 pc. |
| 417985 | Dust shutter for retrofitting (1 set = 24 pcs) | grey | 1 set |

| Article No. | Accessories/Description | PU |
|-------------|--|-------|
| 1401624 | Patch panel termination aid (1 set = 2 angular sheets) | 1 set |
| 1401609 | LSA Plus termination tool for LSA punch down contacts | 1 pc. |

Additional assembly tools / accessories can be found in the chapter System Accessories.